

Students who own a device, or are borrowing

## BYOD at Oxley College

devices as part of the BYOD programme. This programme

is available to Years 10-12 students at Oxley College. These students are encouraged to participate in the Bring Your Own Device (BYOD) programme at Oxley College.

The BYOD programme allows students to bring a computer to Oxley College to support their learning needs. Computers are

controlled student devices at Oxley College. Learning and personalising a student's education, and student-owned devices facilitate

student choice over which device best suits their learning and communication style.

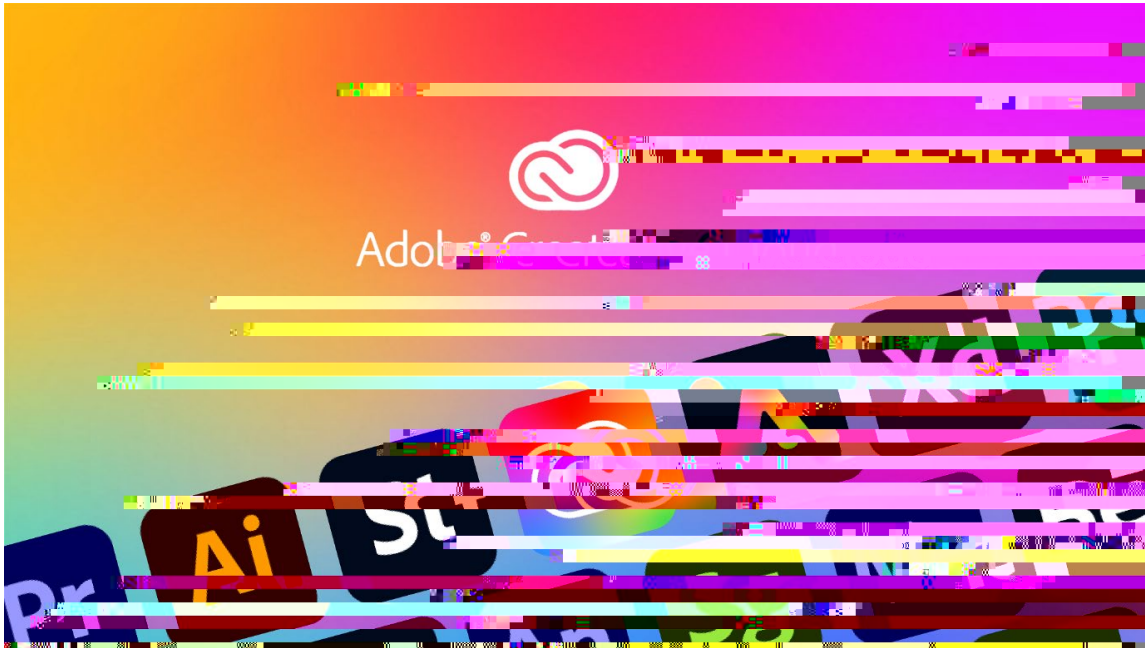
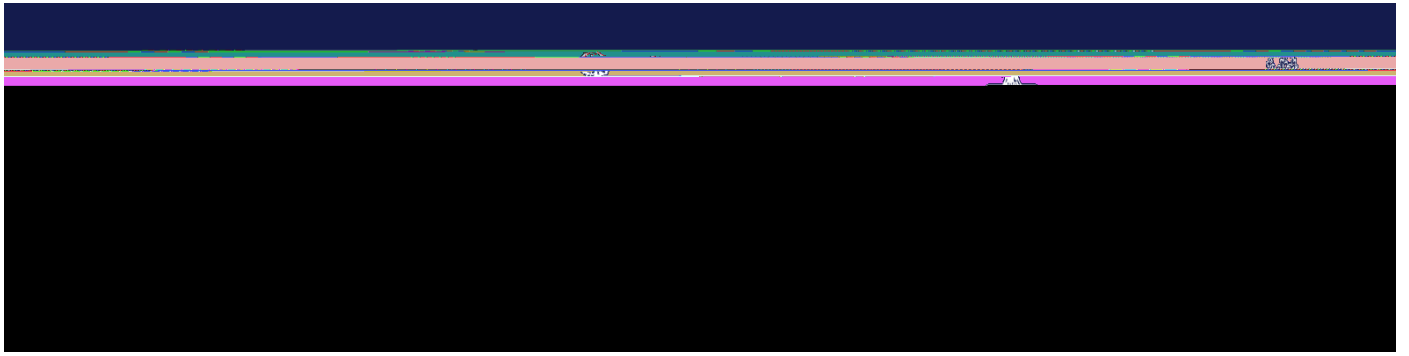
Under the programme, a laptop of a minimum standard is supplied privately by the student and their family then

## Microsoft 365 A3 for students

Benefits include:

- We provide an "@oxley.nsw.edu.au" student email address.
- Office apps on up to 5 devices:
  - Outlook
  - Word
  - Excel
  - PowerPoint
  - ..and more!





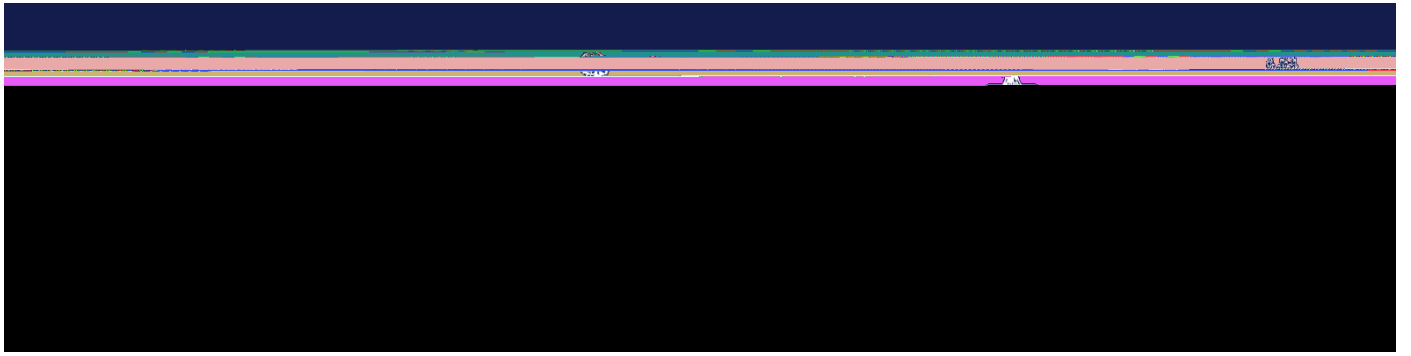
## Help and Support

We have an IT Helpdesk onsite, located in the library. Standard services include:

- Connecting your BYO computer to the school Wi-Fi and printer.
- Assistance installing college approved apps.
- Provide a loan laptop if your child's computer is away for repair (subject to availability).

The helpdesk will make a best effort attempt to resolve any software issues and assist in troubleshooting hardware problems. If a case needs to be referred to a carer or parent, the Helpdesk agent will do so through a representative of the Academic team such as a teacher, student mentor or Head of House.

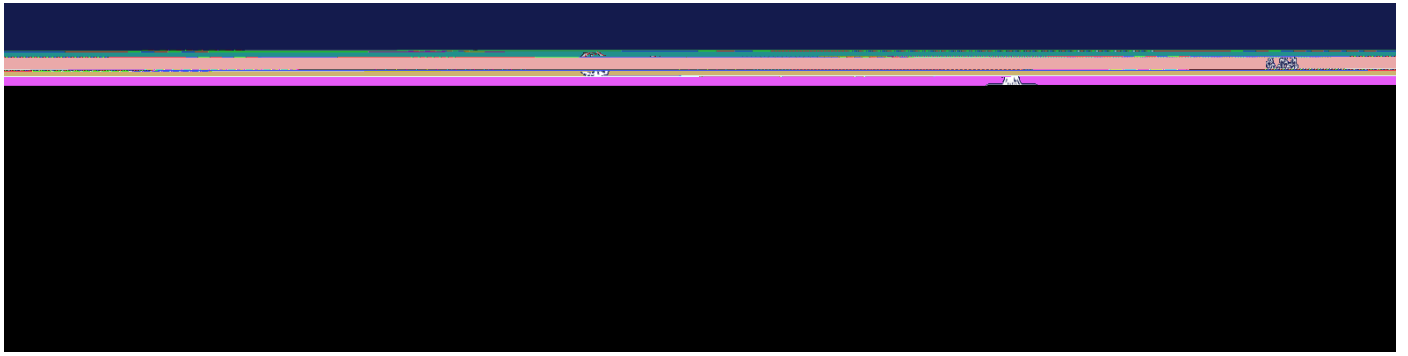




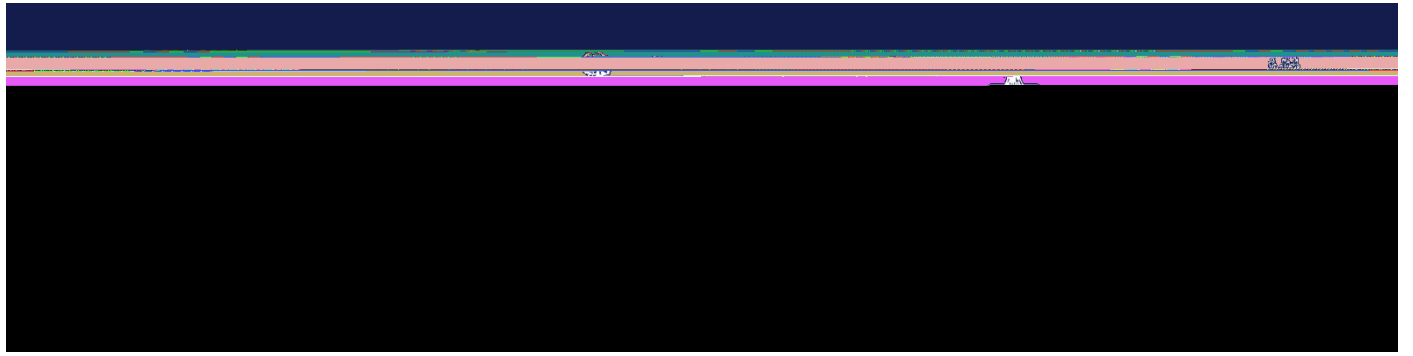
## Network security

As part of our Duty of Care for students, we utilise a variety of tools to protect our network and to ensure your child is





- Please consider whether digital inking (using a stylus to take notes or for digital illustration) is a potential requirement. Many devices support touchscreens but do not have digital stylus support.



## Storage

256Gb

- Accidental Damage Protection is highly recommended.
- Extended warranty to 3-years of coverage is highly recommended.
- Biometric login capabilities such as face unlock, or fingerprint reader are highly recommended.

These minimum specifications and recommended extras are reviewed each year.